

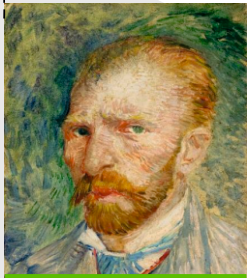
# Guess the picture!



Print the cards twice and cut them out. Each player gets a set of cards.

Player 1 chooses a portrait. Player 2 asks questions. Answer only with yes or no.

Can you guess the portrait? Have fun!



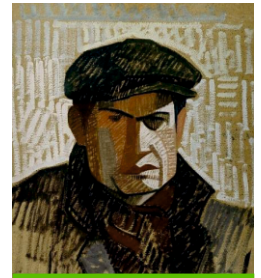
Vincent van Gogh,  
*Self-portrait*, april-june 1887



Charley Toorop,  
*Self-Portrait*, 1953-1954



Isaac Israels,  
*Portrait of a girl*, 1916



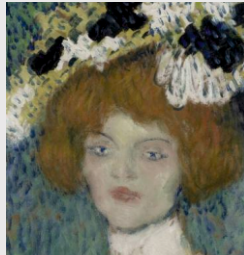
Auguste Herbin,  
*Self portrait, study*, 1910



Odilon Redon,  
*The yellow shawl (Portrait of Camille Redon)*, 1899



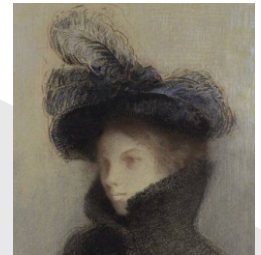
Auguste Herbin,  
*Portrait of the painter Battaglia*, 1906



Pablo Picasso,  
*Portrait of a young woman*, c. 1901



Vincent van Gogh,  
*Portrait of Joseph Roulin*, February-March 1889



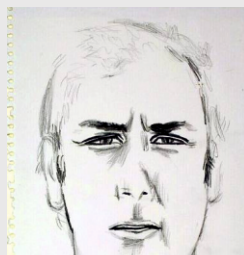
Odilon Redon,  
*Marie Botkine in an astrakhan coat*, 1900



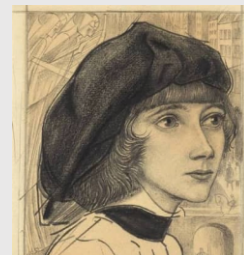
Charley Toorop,  
*Clown in front of the ruins of Rotterdam*, 1940-1941



Bart van der Leck,  
*Composition 1916 no. 1*, 1916



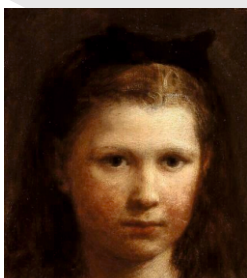
Elsworth Kelly,  
*Geertjan Visser*, 1974



Jan Toorop,  
*Portrait of Millie Hermann*, 1920



Theo van Doesburg,  
*Abstracted head*, c. 1918-1919



Henri Fantin-Latour,  
*Head of a little girl*, 1869



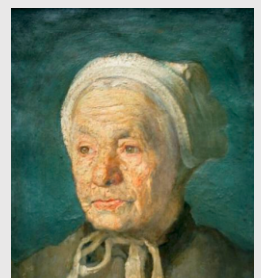
Julio González,  
*Self-portrait*, 1940



Theo van Doesburg,  
*Portrait of a girl*, 1915



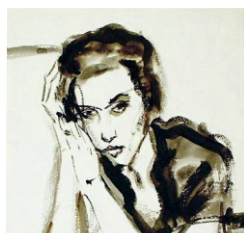
Charley Toorop,  
*Little child*, 1915



Bart van der Leck,  
*Head of a woman*, 1905



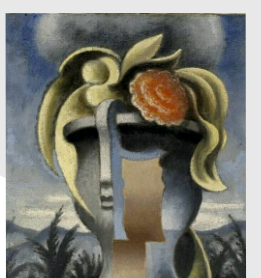
Pablo Picasso,  
*Portrait of a young man (Angel Fernández de Soto)*, 1899-1900



Isaac Israels,  
*Portrait of the actress Fie Carelsen (1890-1975)*, 1920



Vincent van Gogh,  
*L'Arlésienne (portrait of Madame Ginoux)*, February 1890



Jean Metzinger,  
*Allegory*, 1953

Draw a portrait here!

